

BOMBAS CENTRÍFUGAS NORMALIZADAS SOBRE BANCADA

TABLA DE SELECCIÓN

KDN - 4 POLOS \cong 1450 1/min

MODELO	m³/h	0	3	6	12	18	24	30	36	42	48	54
	l/min	0	50	100	200	300	400	500	600	700	800	900
KDN 32-125.1/105	H (m)	3.5	3.4	3.1								
KDN 32-125.1/110		3.9	3.8	3.5								
KDN 32-125.1/115		4.25	4.2	3.9								
KDN 32-125.1/120		4.7	4.6	4.3								
KDN 32-125.1/125		5.1	5.1	4.8								
KDN 32-125.1/130		5.6	5.6	5.3								
KDN 32-125.1/135		6.1	6	5.8	4.4							
KDN 32-125.1/140 *MCE/C		6.6	6.6	6.4	5.1							
KDN 32-125/115		4.3		4.1	3.2							
KDN 32-125/120		4.75		4.6	3.75							
KDN 32-125/125		5.2		5.05	4.2							
KDN 32-125/130		5.7		5.5	4.8							
KDN 32-125/135		6.2		6	5.3	3.65						
KDN 32-125/142 *MCE/C		6.9		6.75	6.15	4.5						
KDN 32-160.1/137		5.3	5.3	4.7								
KDN 32-160.1/145		6.2	6.1	5								
KDN 32-160.1/153		7	7	6.6								
KDN 32-160.1/161		8	7.9	7.6								
KDN 32-160.1/169		8.9	8.9	8.6	5.5							
KDN 32-160.1/177 *MCE/C		9	9.8	9.5	6.6							
KDN 32-160/137		5.9		5.6	4.4							
KDN 32-160/145		6.7		6.5	5.3							
KDN 32-160/153		7.6		7.4	6.25							
KDN 32-160/161		8.5		8.25	7.25							
KDN 32-160/169		9.5		9.3	8.4	6.6						
KDN 32-160/177 *MCE/C		10.5		10.4	9.6	7.8						
KDN 32-200.1/170		8.6	8.5	7.2								
KDN 32-200.1/180		9.8	9.8	9								
KDN 32-200.1/190		11.3	11.1	10.5								
KDN 32-200.1/200		12.8	12.7	11.7	8.3							
KDN 32-200.1/207 *MCE/C		13.8	13.8	13	8.9							
KDN 32-200/170		8.6		8.2	6.7							
KDN 32-200/180		9.9		9.6	8.2							
KDN 32-200/190		11.2		10.9	9.7	7						
KDN 32-200/200 *MCE/C		12.6		12.3	11.1	8.7						
KDN 32-200/210		14.3		14	13.1	10.7						
KDN 32-200/219 *MCE/C		15.7		15.4	14.8	13	9.8					
KDN 40-125/115		4.2		4.1	3.8	3.2	2.4					
KDN 40-125/120		4.6		4.5	4.2	3.7	2.9					
KDN 40-125/125		5.1		4.9	4.7	4.1	3.3					
KDN 40-125/130		5.5		5.4	5.2	4.7	3.9					
KDN 40-125/135		6		5.9	5.8	5.3	4.6					
KDN 40-125/142 *MCE/C		6.7		6.6	6.5	6	5.3	4.1				
KDN 40-160/137		5.9		5.8	5.8	5	3.7					
KDN 40-160/145		6.7		6.6	6.5	6	4.8					
KDN 40-160/153		7.6		7.6	7.5	7	6.8					
KDN 40-160/161 *MCE/C		8.6		8.5	8.4	8	7.1	5.6				
KDN 40-160/169	9.6		9.5	9.5	9.1	8.3	7					
KDN 40-160/177 *MCE/C	10.7		10.7	10.6	10.2	9.5	8.3					
KDN 40-200/170	8.4		8.4	8.2	7.4	5.7						
KDN 40-200/180 *MCE/C	9.7		9.7	9.4	8.8	7.2						
KDN 40-200/190	10.9		10.8	10.7	10.2	8.8	6.8					
KDN 40-200/200 *MCE/C	12.2		12.1	12	11.7	10.4	8.6					
KDN 40-200/210	13.6		13.5	13.5	13.2	12.1	10.6					
KDN 40-200/219 *MCE/C	15		15	15	14.7	13.8	12.4	10.4				
KDN 40-250/220	15.8			15.6	14.8	13.6	12					
KDN 40-250/230 *MCE/C	17.4			17.2	16.5	15.3	13.7					
KDN 40-250/240 *MCE/P-C	19.1			19	18.2	17	15.5					
KDN 40-250/250 *MCE/P	20.7			20.6	20	18.9	17.5					
KDN 40-250/260 *MCE/C	22.7			22.6	22.1	21	19.5					

*MCE - DISPONIBLE VERSIÓN ELECTRÓNICA

BOMBAS CENTRÍFUGAS NORMALIZADAS SOBRE BANCADA

TABLA DE SELECCIÓN

KDN - 4 POLOS \cong 1450 1/min

MODELO	m³/h	0	3	6	12	18	24	30	36	42	48	54	60	66	72	78	84	90	102	114	
	l/min	0	50	100	200	300	400	500	600	700	800	900	1000	1100	1200	1300	1400	1500	1700	1900	
KDN 50-125/115	H (m)	4.2			4.1	3.9	3.6	3.3	2.9	2.3											
KDN 50-125/120		4.6			4.4	4.3	4	3.7	3.3	2.8											
KDN 50-125/125		5			4.9	4.7	4.5	4.2	3.7	3.3											
KDN 50-125/130		5.6			5.4	5.2	5	4.7	4.2	3.8	3.2										
KDN 50-125/135		6			5.8	5.7	5.5	5.2	4.8	4.3	3.8										
KDN 50-125/139 *MCE/C		6.3			6.2	6.1	5.9	5.6	5.2	4.8	4.2										
KDN 50-125/144 *MCE/C		6.7			6.7	6.6	6.4	6.2	5.8	5.3	4.8	4.1									
KDN 50-160/137 *MCE/C		6			6	5.9	5.6	5.2	4.8												
KDN 50-160/145		6.8			6.7	6.7	6.5	6.2	5.8												
KDN 50-160/153 *MCE/C		7.6			7.6	7.5	7.4	7.2	6.7												
KDN 50-160/161		8.4			8.4	8.3	8.2	8.1	7.7												
KDN 50-160/169 *MCE/C		9.4			9.3	9.2	9.2	9.1	8.8												
KDN 50-160/177 *MCE/C		10.4			10.3	10.3	10.2	10.1	9.95												
KDN 50-200/170 *MCE/C		9.5			9.3	9.2	8.8	8	6.85												
KDN 50-200/180		10.6			10.6	10.5	10.1	9.5	8.6	7.3											
KDN 50-200/190 *MCE/C		11.8			11.7	11.6	11.4	10.8	10.1	8.9											
KDN 50-200/200		13.1			13	13	12.8	12.3	11.6	10.6	9.4										
KDN 50-200/210 *MCE/C		14.6			14.6	14.5	14.4	13.9	13.2	12.2	11										
KDN 50-200/219 *MCE/C		16			16	16	15.9	15.4	14.2	13.8	12.7	11.4									
KDN 50-250/220 *MCE/C		15.9			15.7	15.6	15.4	14.9	13.8	12.4	10.5										
KDN 50-250/230		17.4			17.3	17.2	17	16.5	15.5	14.2	12.6	10.3									
KDN 50-250/240		19			19	19	18.8	18.2	17.4	16.2	14.7	12.4									
KDN 50-250/250		20.8			20.8	20.7	20.6	20.1	19.2	18.1	17	14.8									
KDN 50-250/263 *MCE/P-C		23			23	22.9	22.8	22.5	21.7	20.6	19.4	17.5									
KDN 65-125/120/110		3.75					3.5	3.3	3.2	2.9	2.7	2.3	1.9								
KDN 65-125/120		4.25					3.9	3.8	3.6	3.3	3.1	2.7	2.3								
KDN 65-125/125		4.7					4.4	4.25	4.1	3.8	3.6	3.25	2.8								
KDN 65-125/130 *MCE/C		5.1					4.9	4.75	4.6	4.3	4.1	3.8	3.3	2.8							
KDN 65-125/135		5.6					5.4	5.3	5.2	4.9	4.7	4.3	3.9	3.5	3						
KDN 65-125/140		6					5.9	5.8	5.7	5.5	5.2	4.9	4.5	4.1	3.6						
KDN 65-125/144 *MCE/C		6.4					6.35	6.25	6.2	5.9	5.7	5.4	5	4.65	4.2	3.7					
KDN 65-160/137 *MCE/C		5.8					5.7	5.4	5.2	4.75	4.3	3.7									
KDN 65-160/145		6.5					6.5	6.3	6	5.7	5.3	4.75	4.1								
KDN 65-160/153 *MCE/C		7.3					7.2	7.2	6.9	6.7	6.3	5.8	5.25								
KDN 65-160/161		8.2					8.1	8.1	7.9	7.7	7.3	6.85	6.3	5.8							
KDN 65-160/169 *MCE/C		9.1					9.1	9	8.9	8.7	8.4	8	7.6	7.1	6.4						
KDN 65-160/177 *MCE/C		10					10	9.9	9.8	9.7	9.45	9.1	8.7	8.2	7.5						
KDN 65-200/170		9.3				9.3	9.2	9.2	9	8.5	7.9	7.1	6.3								
KDN 65-200/180 *MCE/C		10.4				10.4	10.4	10.3	10.2	10	9.5	8.8	8.1								
KDN 65-200/190 *MCE/C		12.1				12	12	12	11.9	11.5	11.1	10.5	9.8	8.8							
KDN 65-200/200		13.3				13.3	13.3	13.2	13.1	13	12.8	12.3	11.6	10.8							
KDN 65-200/210		14.8				14.7	14.7	14.7	14.6	14.6	14.3	13.8	13.4	12.7	12						
KDN 65-200/219 *MCE/C		16.2				16.2	16.2	16.1	16	15.9	15.8	15.4	15	14.4	13.5	12.7					
KDN 65-250/220		15.8				15.8	15.5	15.1	14.5	14	13.2	12	10.7								
KDN 65-250/230		17.4				17.4	17.2	16.8	16.3	15.7	15	14.1	12.7	11.4							
KDN 65-250/240 *MCE/P-C	19				19	18.9	18.5	18.1	17.5	16.8	16	14.7	13.6								
KDN 65-250/250	20.7				20.7	20.6	20.4	20	19.5	18.8	18	17	15.9	14.5							
KDN 65-250/263 *MCE/P-C	23.2				23	23	22.9	22.5	22.2	21.6	20.8	19.8	18.6	17.4	16						
KDN 65-315/260 *MCE/P-C	22.3				22.2	22.1	22	21.5	21	20.5	20	19.2	18.4	17	16	15					
KDN 65-315/275	25.1				25.1	25	24.8	24.6	24.1	23.5	23	22.5	21.5	20.5	19.4	18.1					
KDN 65-315/290 *MCE/P-C	28.2				28.2	28.1	28	27.8	27.3	27	26.5	25.5	25	24	23.1	22	19.5				
KDN 65-315/305	31.7				31.5	31.4	31.4	31.3	31.2	30.8	30.4	29.6	29	28	27.2	26.1	23.5				
KDN 65-315/320 *MCE/P-C	35.7				35.4	35.3	35.2	35.1	35	34.8	34.5	33.8	33.5	32.5	31.5	30.8	28	24.8			

*MCE - DISPONIBLE VERSIÓN ELECTRÓNICA

BOMBAS CENTRÍFUGAS

BOMBAS CENTRÍFUGAS NORMALIZADAS SOBRE BANCADA

TABLA DE SELECCIÓN

KDN - 4 POLOS \cong 1450 1/min

MODELO	m³/h	0	42	48	54	60	66	72	78	84	90	102	114	120	150	180	210	240	270	300	330	360	390	420
	l/min	0	700	800	900	1000	1100	1200	1300	1400	1500	1700	1900	2000	2500	3000	3500	4000	4500	5000	5500	6000	6500	7000
KDN 80-160/147/127		5.7	5.4	5.25	5.05	4.8	4.6	4.35	4.15	3.85	3.6	3.1	2.5	2.2										
KDN 80-160/153/136		6.4	6.2	6.05	5.85	5.7	5.4	5.15	4.8	4.65	4.4	3.85	3.3	3										
KDN 80-160/153 *MCE/C		7.3	7.1	6.9	6.7	6.5	6.3	6	5.75	5.4	5.2	4.55	3.9	3.6										
KDN 80-160/161 *MCE/C		8.2	8	7.9	7.75	7.5	7.3	7.05	6.8	6.5	6.25	5.6	4.9	4.6										
KDN 80-160/169		9.1	9	8.85	8.7	8.6	8.35	8.1	7.85	7.6	7.3	6.75	6	5.7										
KDN 80-160/177 *MCE/C		10	9.9	9.85	9.8	9.7	9.5	9.3	9.1	8.85	8.7	8.1	7.25	6.9										
KDN 80-200/170 *MCE/C		9.2	9.1	9	8.7	8.5	8.2	7.8	7.5	7.1	6.7	5.6												
KDN 80-200/180		10.3	10.2	10.2	10	9.9	9.6	9.2	9	8.6	8.2	7.2												
KDN 80-200/190		11.4	11.4	11.3	11.2	11.1	11	10.7	10.5	10.1	9.8	8.7	6.8											
KDN 80-200/200 *MCE/C		12.7	12.6	12.6	12.6	12.5	12.4	12.3	12	11.6	11.4	10.5	9.4	8.8										
KDN 80-200/210		14.1	14	14	14	13.9	13.8	13.7	13.6	13.3	13.1	12.1	11.2	10.6										
KDN 80-200/222 *MCE/C		15.9	15.9	15.8	15.7	15.6	15.6	15.5	15.4	15.3	15	14.3	13.4	12.8										
KDN 80-250/220		16	15.9	15.8	15.7	15.6	15.5	15.2	14.9	14.5	13.9	12.8												
KDN 80-250/230 *MCE/P-C		17.3	17.3	17.2	17.1	17	16.9	16.8	16.5	16	15.5	14.3	12.4											
KDN 80-250/240		19	19	19	18.9	18.8	18.7	18.6	18.4	18	17.6	16.6	15.3	14.6										
KDN 80-250/250		20.8	20.7	20.7	20.7	20.6	20.5	20.4	20.3	19.9	19.6	18.6	17.4	16.8										
KDN 80-250/260 *MCE/P-C		22.6	22.5	22.5	22.4	22.3	22.2	22.1	22	21.8	21.4	20.6	19.6	19	15.1									
KDN 80-250/270 *MCE/P-C		24.5	24.4	24.4	24.4	24.3	24.2	24.1	24	23.7	23.3	22.4	21.4	20.7	16.3									
KDN 80-315/275		24.8	24.8	24.8	24.7	24.6	24.5	24.4	24.3	24	23	21.4	20.5											
KDN 80-315/290 *MCE/P-C		27.8	27.8	27.8	27.7	27.7	27.6	27.6	27.5	27.4	26.5	25	24.6	19.1										
KDN 80-315/305		31.4	31.4	31.3	31.2	31.2	31.2	31.2	31.2	30.9	30	29	28.5	24										
KDN 80-315/320		34.8	34.7	34.6	34.6	34.5	34.4	34.3	34	33.9	33.8	33.2	32.8	28.8										
KDN 80-315/334		38.3	38.2	38.2	38.2	38.2	38.2	38.1	38	37.9	37.6	37	36.9	33.1	28									
KDN 100-200/180 *MCE/C		10.1			10.1	10.1	10	9.9	9.7	9.5	9.1	8.5	8.3	7	5.4									
KDN 100-200/190		11.6			11.5	11.4	11.3	11.2	11.1	11	10.5	10.1	10	8.6	7									
KDN 100-200/200 *MCE/C		12.9			12.8	12.8	12.8	12.7	12.6	12.5	12.2	11.8	11.6	10.4	8.8									
KDN 100-200/210		14.3			14.2	14.2	14.2	14.2	14.1	14	13.8	13.5	13.3	12.3	10.7	9								
KDN 100-200/219 *MCE/C		16			15.7	15.7	15.6	15.6	15.5	15.5	15.3	15.1	15	14	12.5	10.8								
KDN 100-250/220		15.2			14.9	14.9	14.9	14.8	14.7	14.6	14.3	13.7	13.4	11.4										
KDN 100-250/230		16.9			16.7	16.7	16.6	16.5	16.4	16.3	16.1	15.7	15.3	13.6	11.1									
KDN 100-250/240 *MCE/C		18.5			18.3	18.3	18.3	18.2	18.1	18	17.9	17.6	17.4	15.7	13.3									
KDN 100-250/250		20.1			20	20	19.9	19.8	19.7	19.6	19.5	19.4	19.2	17.6	15.4									
KDN 100-250/260 *MCE/P-C		22.3			22.1	22.1	22.1	22	21.9	21.8	21.7	21.5	21.4	19.8	17.7	15.1								
KDN 100-250/270		24.3			24.3	24.3	24.3	24.3	24.3	24.2	24.1	23.7	23.5	22.1	20.1	17.3								
KDN 100-315/275 *MCE/P-C		25.1			25	25	25	24.9	24.8	24.7	24.6	24.4	24	22	19									
KDN 100-315/290		28			27.9	27.9	27.9	27.9	27.8	27.7	27.6	27.5	27	25.5	23									
KDN 100-315/305		31.3			31.1	31.1	31.1	31	30.9	30.8	30.7	30.6	30.5	29	27	24								
KDN 100-315/320		34.5			34.4	34.4	34.4	34.4	34.4	34.3	34.2	34.1	34	33	31	28.1								
KDN 100-315/334		38.2			38.2	38.1	38.1	38.1	38	38	37.7	37.5	37.3	36.5	34.8	32	28.8							
KDN 125-250/220		15									14.9	14.9	14.8	14.5	14	13	11.8	10.5	9.2					
KDN 125-250/230 *MCE/C		16.6									16.6	16.6	16.5	16.3	15.6	14.8	13.8	12.5	12.3	9.5				
KDN 125-250/240		18.2									18.1	18.1	18.1	18	17.7	16.8	15.8	14.5	13.3	11.6	10.1			
KDN 125-250/250		19.9									19.8	19.8	19.7	19.6	19.4	18.7	17.8	16.6	15.5	14	12.3			
KDN 125-250/260		21.7									21.7	21.6	21.5	21.4	21.3	20.6	19.9	18	17.7	16.3	14.6	13		
KDN 125-250/269		23.9									23.9	23.9	23.8	23.6	23.2	22.7	22.1	22.2	20.2	19	17.5	15.6	14	
KDN 150-200/210/170		8.9									8.9	8.9	8.8	8.7	8.6	8.3	7.9	7.4	6.8	6.2	5.4	4.5		
KDN 150-200/218/182 *MCE/C		10.4									10.4	10.4	10.3	10.2	9.9	9.5	9.1	8.6	8.1	7.4	6.6	5.8		
KDN 150-200/218/200		11.4									11.4	11.4	11.4	11.2	10.9	10.6	10.1	9.7	9.2	8.5	7.8	6.9	5.9	
KDN 150-200/218		12.9									12.7	12.7	12.6	12.4	12.1	11.7	11.2	10.7	10.2	9.6	8.8	8	7.1	
KDN 150-200/224 *MCE/C		13.8									13.6	13.6	13.5	13.3	13	12.6	12.2	11.7	11.2	10.6	9.9	9.2	8.2	

*MCE - DISPONIBLE VERSIÓN ELECTRÓNICA

BOMBAS CENTRÍFUGAS NORMALIZADAS SOBRE BANCADA

TABLA DE SELECCIÓN

KDN - 2 POLOS \cong 2900 1/min

MODELO	m³/h	0	6	12	18	24	30	36	42	48	54
	l/min	0	100	200	300	400	500	600	700	800	900
KDN 32-125.1/105	H (m)	13.8	13.6	12.3	9.7						
KDN 32-125.1/110 *MCE/C		15.5	15.2	13.9	11.5						
KDN 32-125.1/115		17.1	16.8	15.5	13.2						
KDN 32-125.1/120		18.8	18.5	17.3	15.1						
KDN 32-125.1/125		20.5	20.3	19.1	17						
KDN 32-125.1/130 *MCE/P-C		22.3	22.2	21.3	19						
KDN 32-125.1/135		24.4	24.1	23.3	21.1	17.8					
KDN 32-125.1/140 *MCE/P-C		26.5	26.4	25.6	23.4	20.1					
KDN 32-125/115		17.3		16.5	15.1	12.9					
KDN 32-125/120		19		18.2	17	14.9	11.1				
KDN 32-125/125 *MCE/P-C		20.9		20.1	18.9	16.9	13.5				
KDN 32-125/130 *MCE/P-C		22.9		22	21	19.1	16.2				
KDN 32-125/135		24.9		24	22.1	21.5	18.5	14.7			
KDN 32-125/142 *MCE/P-C		27.8		27	26.1	24.5	21.7	18			
KDN 32-160.1/137 *MCE/P-C		21.5	21.2	19.3							
KDN 32-160.1/145 *MCE/P-C		24.7	24.5	22.3	16.5						
KDN 32-160.1/153 *MCE/P-C		28.3	28	26	20.5						
KDN 32-160.1/161		32	31.8	30	25						
KDN 32-160.1/169		36	35.7	34.4	29.5						
KDN 32-160.1/177 *MCE/P-C		39.5	39.3	38.2	34.5	26					
KDN 32-160/137		23.7		22.6	20.7	17.6					
KDN 32-160/145 *MCE/P-C		27		25.8	23.9	21.2	16.9				
KDN 32-160/153		30.4		29.5	27.7	25.8	21.2				
KDN 32-160/161 *MCE/P-C		34		33	31.7	29.1	25.5				
KDN 32-160/169		38		37.3	36	33.6	35.7	26.5			
KDN 32-160/177 *MCE/P-C		41.8		41.5	40.5	38.4	35.3	31.4			
KDN 32-200.1/170 *MCE/P-C		34.3	34.2	31.9	23.5						
KDN 32-200.1/180		39.4	39.2	36.7	30						
KDN 32-200.1/190 *MCE/P-C		45.3	44.7	41.5	35.5						
KDN 32-200.1/200		51.5	51	47.3	41	35					
KDN 32-200.1/207 *MCE/P-C		55.3	55	51.8	46.4	37					
KDN 32-200/170		34		33	31	27	21				
KDN 32-200/180 *MCE/P-C	39		38.5	36.5	32.5	28					
KDN 32-200/190	45		43.5	42	39	34	28.5				
KDN 32-200/200 *MCE/P-C	51		49	48	45	40.5	35				
KDN 32-200/210 *MCE/P-C	57		56	55	52.5	48.5	43	36			
KDN 32-200/219 *MCE/P-C	63		62	61	59	56.5	52.5	46.5	39.5		

*MCE - DISPONIBLE VERSIÓN ELECTRÓNICA

BOMBAS CENTRÍFUGAS NORMALIZADAS SOBRE BANCADA

TABLA DE SELECCIÓN

KDN - 2 POLOS \cong 2900 1/min

MODELO	m³/h	0	6	12	18	24	30	36	42	48	54	60	66	72	78	84	90	102	114	
	l/min	0	100	200	300	400	500	600	700	800	900	1000	1100	1200	1300	1400	1500	1700	1900	
KDN 40-125/115	H (m)	16.8		13.3	15.6	15	14.3	13.2	12.6	9.8										
KDN 40-125/120 *MCE/C		18.5		18	17.5	17	16	15	13.5	11.8										
KDN 40-125/125		20.4		20	19.5	19	18	16.7	15.3	13.5										
KDN 40-125/130		22		21.8	21.5	21	20	19	17.5	15.7	14									
KDN 40-125/135		24.1		24	23.9	23.4	22.5	21.5	20	18.3	16.4									
KDN 40-125/142 *MCE/P-C		26.8		26.6	26.4	26	25.3	24.4	23	21.4	19.4	17								
KDN 40-160/137		23.9			23.8	23	22	20.5	18	15										
KDN 40-160/145 *MCE/P-C		27.5			27.4	27	25.7	24.2	22.1	19.5										
KDN 40-160/153		31.1			31	30.5	29.5	28	26.5	24	21									
KDN 40-160/161 *MCE/P-C		34.5			34.5	34.4	33.7	32.3	30.5	28.5	25.8	22.5								
KDN 40-160/169		38.4			38.4	38.2	38	37	35	33.5	31	28								
KDN 40-160/177 *MCE/P-C		42.6			42.5	42.4	42	41.5	40	38.5	35	33	30							
KDN 40-200/170		33.6			33	32.6	32	30	26.5	22.5										
KDN 40-200/180 *MCE/P-C		38.8			38.5	38	37	35	32.5	29	25									
KDN 40-200/190		43.4			43.1	43	42.7	41	38	35	31.5	27								
KDN 40-200/200 *MCE/P-C		48.7			48.4	48.2	47.5	46.5	44	41.5	38.5	34.5								
KDN 40-200/210		54.3			54.1	54	53.6	53	51	48.5	46	42.5	38							
KDN 40-200/219 *MCE/P-C		60			59.8	59.7	59.4	59	57	55	52.5	49.5	46	40						
KDN 40-250/220 *MCE/P-C		63.1			62.8	62.5	61	59	57	55	52	48								
KDN 40-250/230		69.5			69.3	68.5	67.8	66	63.5	61	58	55	51							
KDN 40-250/240		76.3			76	75.8	75	73	70.5	68	65	62	58.5							
KDN 40-250/250		82.8			82.5	82	81.8	80	78	75.5	72.5	69	66							
KDN 40-250/260		91			90.5	90	89.5	88.5	86.5	84	81	78	74							
KDN 50-125/115		17.1					15.9	15.5	15	14.3	13.6	13	12.2	11.5	10.4	9				
KDN 50-125/120		18.2					17.5	17	16.5	16	15.3	14.7	14	13.2	12	11.2	10			
KDN 50-125/125 *MCE/C		19.8					19.4	19	18.5	17.9	17.4	16.6	16	15.1	14	13	11.8			
KDN 50-125/130		21.5					21.1	20.8	20.5	19.8	19.2	18.5	17.8	17	16.5	15.2	14			
KDN 50-125/135		23.2					23	22.6	22.3	21.8	21.2	20.6	19.9	19.3	18.4	17.5	16.3	13.7		
KDN 50-125/139 *MCE/P-C		24.7					24.5	24.3	24	23.5	23	22.4	21.6	20.8	20	19.2	18	15.5		
KDN 50-125/144 *MCE/P-C		25.9					26.5	26.4	26.1	25.6	25.1	24.5	24	23.2	22.3	21.5	20.5	17.8	15	
KDN 50-160/137		24.2					23.8	23.7	23.5	22.5	22	21	20.3	19	18	16.8	15			
KDN 50-160/145 *MCE/P-C		27.2					27	26.9	26.6	26.4	25.5	25	23.8	23	21.5	20.5	19			
KDN 50-160/153		30.3					30.3	30.2	30	29.9	29.5	28.5	27.7	26.5	25.5	24.5	23			
KDN 50-160/161 *MCE/P-C		33.8					33.7	33.7	33.6	33.6	33.3	32.5	31.8	31	29.8	28.5	27.5			
KDN 50-160/169		37.7					37.7	37.5	37.5	37.4	37	36.2	35.7	35.5	34.2	33	31.5	29		
KDN 50-160/177 *MCE/P-C		41.6					41.5	41.5	41.3	41.2	41	40.6	40.5	39.5	38.8	38	36.7	33.5		
KDN 50-200/170		37.9					37	36.8	36.4	35	34	32	30	27	25					
KDN 50-200/180 *MCE/P-C		42.5					42	41.7	41.4	40.5	39.5	38	36	34	32	29				
KDN 50-200/190 *MCE/P-C		47.2					46.8	46.6	46	45.7	44.5	43.5	42	40	38	35.5	33			
KDN 50-200/200		52.4					52.2	52	18	51.5	50.5	49	47.5	46	44.5	42	40			
KDN 50-200/210		58.4					58.4	58.2	58	57.5	56.5	55.5	54	52.5	51	49	46.5	41.5		
KDN 50-200/219		64					64	64	64	63.5	62.5	61.5	60	58.5	57	55	53	48.5		
KDN 50-250/220		63.7					63.3	63.1	63	62	61	59	57.5	55	53	50	46.5	36		
KDN 50-250/230		69.6					69.3	69	68.8	68.5	68	66	64	62	60	57	54	45		
KDN 50-250/240		76					75.8	75.5	75.3	75	74.5	73	71.5	69	67	65	62	55		
KDN 50-250/250	83.2					83	82.9	82.8	83.5	82	80.5	78.5	77	75	72.5	70	64			
KDN 50-250/263	92.1					92	91.8	91.6	91.5	91.3	89.9	88.5	86.5	84.5	82.5	80	75	61		

*MCE - DISPONIBLE VERSIÓN ELECTRÓNICA

BOMBAS CENTRÍFUGAS NORMALIZADAS SOBRE BANCADA

TABLA DE SELECCIÓN

KDN - 2 POLOS \cong 2900 1/min

MODELO	m³/h	0	48	54	60	66	72	78	84	90	102	114	120	150	180	210	240	270	300	330	360	390	420
	l/min	0	800	900	1000	1100	1200	1300	1400	1500	1700	1900	2000	2500	3000	3500	4000	4500	5000	5500	6000	6500	7000
KDN 65-125/120/110 *MCE/C	16	14.4	14	13.6	13.1	12.8	12.2	11.9	11.4	10.2	8.7	8											
KDN 65-125/120	17.8	16	15.8	15.3	14.9	14.4	13.9	13.4	13	11.5	10.3	9.4											
KDN 65-125/125	19.4	17.8	17.5	17.1	16.8	16.4	16	15.4	15	13.5	12.2	11.4											
KDN 65-125/130 *MCE/P-C	21	19.6	19.5	19.1	18.9	18.5	18	17.5	17	15.7	14.2	13.2											
KDN 65-125/135	22.6	21.8	21.5	21.3	21	20.5	20.1	19.6	19.2	18	16.5	15.6											
KDN 65-125/140	24	23.6	23.5	23.4	23	22.8	22.3	22	21.4	20.3	18.9	18	13.8										
KDN 65-125/144 *MCE/P-C	25.6	25.5	25.4	25.2	25	24.6	24.3	24	23.4	22.5	21.1	20.2	16										
KDN 65-160/137 *MCE/P-C	23.1	22.4	22	21.7	21.3	20.5	19.7	19	18	16													
KDN 65-160/145	26.2	25.7	25.5	25	24.6	24	23.5	22.7	22	20	17.8	16.5											
KDN 65-160/153 *MCE/P-C	29.1	28.8	28.5	28.6	28.5	28	27.5	26.6	26	24	22	21											
KDN 65-160/161	32.6	32.5	32.4	32.3	32	31.7	31.3	30.5	30	28.5	26.5	25.5											
KDN 65-160/169 *MCE/P-C	36.4	36.3	36.2	36.1	36	35.7	35.3	34.7	34	32.7	31	30											
KDN 65-160/177	40.1	39.9	39.8	39.7	40	39.8	39.5	39	38.5	37.2	35.5	34.7	28.5										
KDN 65-200/170 *MCE/P-C	37.2	36.8	36.7	36.6	36.5	36	35	34	32.5	30	27	25											
KDN 65-200/180	41.7	41.4	41.3	41.2	41.1	41	40.5	40	39	36.5	34	32											
KDN 65-200/190	48.3	48.2	48.1	48	47.9	47.5	47	41	45	43	40.5	39											
KDN 65-200/200	53.2	53.1	52.9	52.8	52.7	52.5	52.3	52	51.8	50	48	46.5											
KDN 65-200/210	59.2	59.1	59	58.9	58.8	58.7	58.5	58.2	58	56.5	54.5	53.5											
KDN 65-200/219	64.9	64.9	64.8	64.5	64.3	64.1	64	63.8	62.5	62.4	61	60	52.5										
KDN 65-250/220	63.2	62.8	62.5	62	61	60	59.5	58	57	54	50.5	48											
KDN 65-250/230	69.5	69.5	69	68.5	68	67	66	65	64	63	58.5	56.5											
KDN 65-250/240	76	75.7	75.5	75	75	74	73	72	71	69	66	64											
KDN 65-250/250	83	82.3	82.3	82.2	82	81.5	81	80	79	76.5	73.5	72	60										
KDN 65-250/263	92.6	91.8	91.8	91.7	91.5	91.5	91	90	89.5	87.5	85	83	72.5										
KDN 65-315/260	92.8				92.7	91.9	90.9	89.7	88.5	85.5	81.9	79.9	67.8										
KDN 65-315/275	105				104.5	103.9	103.1	102.1	101.1	98.5	95.5	93.8	83.3	69.5									
KDN 65-315/290	117.1				117.0	116.5	115.9	115.1	114.3	112.2	109.7	108.3	99.4	87.6									
KDN 65-315/305	130				129.6	129.2	128.7	128.0	127.3	125.5	123.2	121.9	113.8	103.0	89.6								
KDN 65-315/320	143				142.9	142.6	142.1	141.6	140.9	139.3	137.3	136.2	128.9	119.1	106.8	92.0							
KDN 80-160/147-127	23								21.5	20.7	20	19.5	17	14.5	11.8	8.8							
KDN 80-160/153-136 *MCE/P-C	25.6								24.5	23.8	23	22.5	20.2	17.5	15	11.8							
KDN 80-160/153 *MCE/C	29.3								28	27.3	26.5	26	23.5	20.7	16.5	14.5							
KDN 80-160/161	32.8								32	31.5	30.5	30	27.8	25	21.5	18.5							
KDN 80-160/169	36.5								35.7	35.2	34.5	34.2	32	29.5	26.5	22.6	18.5						
KDN 80-160/177	40								39.5	39.2	38.7	38.5	37	34.8	31.8	27.8	23						
KDN 80-200/170	36.6								35.7	35.5	34.5	34	31	27	21.5								
KDN 80-200/180	41								40.6	40.5	40	39.5	37	33	27.5								
KDN 80-200/190	45.7								45.4	45	44.5	44	42	29	34								
KDN 80-200/200	50.8								50.4	50.2	50	49.6	49	46.5	41	35							
KDN 80-200/210	56.3								55.9	55.8	55.7	55.6	54.8	52	48	43							
KDN 80-200/222	63.6								63.4	63.3	63.2	63.1	63	60	56.5	51.5	45						
KDN 80-250/220	62.6								62.5	62.4	62	61.8	60	55.5	49								
KDN 80-250/230	68.3								68.2	68.1	68	67.9	67	63	57	50							
KDN 80-250/240	75.5								75.4	75.3	75.2	75	74.5	71	65.5	58.5							
KDN 80-250/250	82.5								82.3	82	81.9	81.7	82	78.5	74	67.5	60.5						
KDN 80-250/260	90								89.7	89.6	86.5	89.3	89	86.5	82	77	70	61.5					
KDN 80-250/270	97.9								97.8	97.5	91.3	97	96.5	94	89	84	77	69					
KDN 80-315/275	101								101	100.8	100.8	100.7	100.1	97.6	92	82.7	73.5						
KDN 80-315/290	114								113.9	113.8	113.8	113.7	112	109.8	106.6	99.3	92.5	80.1					
KDN 100-200/180	40.4												40	38	36	33	30.5	28	25				
KDN 100-200/190	46.5												45	44	42	39	37	34.5	31	28			
KDN 100-200/200	51.5												51	50	48.5	46	44	42	39	35	31.5		
KDN 100-200/210	57.5												57	56	55	53	51	49	46	43	39	36	
KDN 100-200/219	64												62.5	62	61	60	58	56	53	50	47	43	
KDN 100-250/220	61.1												60	59.5	57	54	50.5	46.5	42				
KDN 100-250/230	67.4												66.9	66.5	64	61	58	54	49	44			
KDN 100-250/240	73.5												72.9	71	70.5	69	66	63	58.5	53			
KDN 100-250/250	79.7												79.5	79	78.8	77	74	71	67	62.5			
KDN 100-250/260	88.6												88.2	88.1	88	86	83	79.5	76	71.5	66		

H (m)

*MCE - DISPONIBLE VERSIÓN ELECTRÓNICA

BOMBAS CENTRÍFUGAS



KDN

BOMBAS CENTRÍFUGAS NORMALIZADAS



Bombas centrífugas normalizadas monocelular, diseñadas para cubrir una amplia gama de aplicaciones:

- Suministro de agua.
- Circulación de agua caliente para calefacción
- Circulación de agua fría para acondicionamiento y refrigeración.
- Trasiego de líquidos en agricultura, horticultura y en la industria.
- Realización de grupos de bombeo.

Estas bombas pueden acoplarse a un motor eléctrico de dos o de cuatro polos y montarse sobre una bancada de chapa estampada conforme a UNI EN 23661.

Cuerpo de fundición en espiral, monocelular, de conformidad con la norma DIN-EN 733 (ex DIN 24255), tapa porta-cierre y soporte del motor de fundición, bridas de conformidad con la norma DIN 2533 (DIN 2532 para el modelo DN 200).

Rodete de fundición (bronce bajo pedido), cerrado y equilibrado dinámicamente con compensación del empuje axial mediante orificios de equilibrio, funcionamiento (bajo pedido) con anillos de desgaste intercambiables. Eje de la bomba de acero inoxidable sostenido por dos cojinetes de bola sobradamente dimensionados, engrasados de por vida y montados en una cámara especial en el interior del soporte. Dispositivo de cierre estándar: cierre mecánico normalizado según la norma DIN 24960 de carbono/carburo de silicio con juntas tóricas OR de EPDM.

Velocidad de rotación 1450 - 2900 1/min.

Rango de funcionamiento

de 1 a 420 m³/h con alturas de elevación de hasta 100 metros.

Líquido bombeado limpio, sin sustancias sólidas ni abrasivas, no viscoso, no agresivo, no cristalizado y químicamente neutro, con características similares al agua.

Rango de temperatura del líquido

de -10°C a +140°C.

Temperatura ambiente máxima +40°C.

Presión máxima de trabajo

16 bar - 1600 kPa (para DN 200 máx. 10 bar).

Bridas

PN 16 DIN 2533 - PN 10 DIN 2532 para DN 200

Instalación

en posición horizontal.

DISPONIBLE MODELO COMPLETO CON MOTOR (CONSULTE CON NUESTRA RED DE VENTAS) O SOLO PARTE HIDRÁULICA

IE3 ≥ 0,75 kW

ACCESORIOS
PÁG. 212

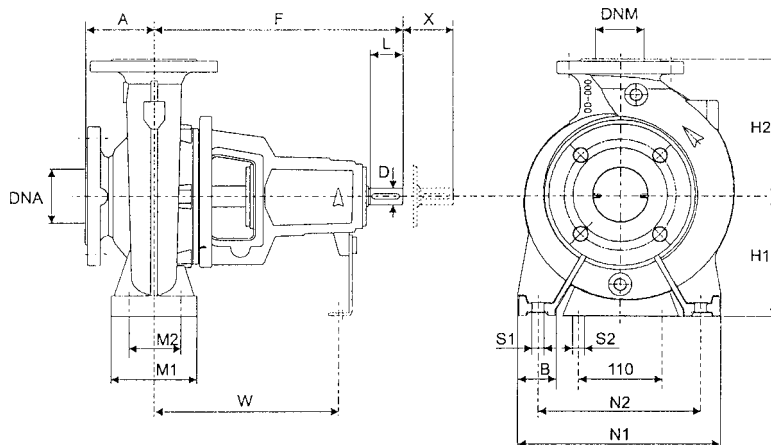
KDN - PARTE HIDRÁULICA

MODELO	CÓDIGO TURBINA FUNDICIÓN	CÓDIGO TURBINA BRONCE	DNA	DNM	PESO Kg.
KDN32-125.1	1D1K11000	1D1K21000	50	32	37
KDN32-125	1D1111000	1D1121000	50	32	36
KDN32-160.1	1D1L11000	1D1L21000	50	32	38
KDN32-160	1D1211000	1D1221000	50	32	38
KDN32-200.1	1D1M11000	1D1M21000	50	32	46
KDN32-200	1D1311000	1D1321000	50	32	46
KDN40-125	1D2111000	1D2121000	65	40	39
KDN40-160	1D2211000	1D2221000	65	40	41
KDN40-200	1D2311000	1D2321000	65	40	49
KDN40-250	1D2411000	1D2421000	65	40	57
KDN50-125	1D3111000	1D3121000	65	50	42
KDN50-160	1D3211000	1D3221000	65	50	44
KDN50-200	1D3311000	1D3321000	65	50	51
KDN50-250	1D3411000	1D3421000	65	50	59
KDN65-125	1D4111000	1D4121000	80	65	46
KDN65-160	1D4211000	1D4221000	80	65	47
KDN65-200	1D4311000	1D4321000	80	65	66
KDN65-250	1D4411000	1D4421000	80	65	93
KDN65-315	1D4511000	1D4521000	80	65	112
KDN80-160	1D5211000	1D5221000	100	80	55
KDN80-200	1D5311000	1D5321000	100	80	84
KDN80-250	1D5411000	1D5421000	100	80	104
KDN80-315	1D5511000	1D5521000	100	80	122
KDN100-200	1D6311000	1D6321000	125	100	96
KDN100-250	1D6411000	1D6421000	125	100	111
KDN100-315	1D6511000	1D6521000	125	100	126
KDN125-250	1D7411000	1D7421000	150	125	135
KDN150-200	1D8311000	1D8321000	200	150	178



KDN

BOMBAS CENTRÍFUGAS NORMALIZADAS



MODELO	max 1450 min ⁻¹		max 2900 min ⁻¹		DIM. BRIDAS		DIMENSIONES BOMBA				DIMENSIONES SOPORTE					AGUJEROS PERNOS		EXTREMIDAD EJE		X	PESO Kg		
	Q m ³ /h	H m	Q m ³ /h	H m	DNA	DNM	A	F	H1	H2	B	M1	M2	N1	N2	W	S1	S2	D			L	
KDN 32-125.1	10.5	5.5	20.9	22	50	32	80	360	112	140	50	100	70	190	140	260	M12	M12	24	50	100	37	
KDN 32-125	13.6	5.8	28	22.8					132	160												38	
KDN 32-160.1	8.7	8.3	17.5	33					160	180												38	
KDN 32-160	15.9	8.6	31	34					240	190												46	
KDN 32-200.1	8.5	11.4	18	45					260	210												46	
KDN 32-200	17.7	13.2	35.5	52.5					260	210												46	
KDN 40-125	21.8	5.6	46	21.5	65	40	80	112	140	50	100	70	210	160	260	M12	M12	24	50	100	39		
KDN 40-160	25.8	9.2	50	37.2			360	132	160				41										
KDN 40-200	29	12.6	57	51			160	180	49														
KDN 40-250	31	19.1	62	77			180	225	65				125	95							320	250	57
KDN 50-125	41	5.4	83	21.5	65	50	100	132	160	50	100	70	240	190	260	M12	M12	24	50	100	42		
KDN 50-160	43.3	9.3	87.5	37			160	180	44														
KDN 50-200	41	14	81	56			200	225	65				125	95							320	250	51
KDN 50-250	49	19.1	100	76			180	225	65				125	95							320	250	59
KDN 65-125	57	5.2	114	21	80	65	100	160	180	65	125	95	280	212	260	M12	M12	24	50	100	46		
KDN 65-160	61	8.6	121	34.5			360	200	47														
KDN 65-200	62	14.8	123	59			180	225	66														
KDN 65-250	65.4	20	129	81			200	250	80				160	120							360	280	93
KDN 65-315	84	31.5	-	-			225	280	80				160	120							400	315	112
KDN 80-160	101	8.1	195	33.5			100	80	125				360	225							65	125	95
KDN 80-200	101	14.4	200	57.5	180	250			84														
KDN 80-250	103	23	215	88	200	280			80	160	120	345	280	104									
KDN 80-315	136	35	-	-	250	315			80	160	120	400	315	122									
KDN 100-200	163	13.4	315	53	125	100	140	200	280	80	160	120	360	280	340	M16	M12	32	80	140	96		
KDN 100-250	159	21.8	313	87			225	315	80				160	120							400	315	111
KDN 100-315	187	34.1	-	-			250	315	80				160	120							400	315	126
KDN 125-250	289	20.5	-	-	150	125	140	470	250	355	80	160	120	400	315	340	M16	M12	32	80	140	135	
KDN 150-200	378	10	-	-	200	150	160	470	280	400	100	200	150	550	450	340	M20	M12	32	80	140	178	

BOMBAS CENTRÍFUGAS

	Diametro nominal (DN)								
	DIN 2533 PN 16								DIN 2533 PN 10
	32	40	50	65	80	100	125	150	200
D1	32	40	50	65	80	100	125	150	200
D2	100	110	125	145	160	180	210	240	295
D3	140	150	165	185	200	220	250	285	340
S	18	18	18	18	18	18	18	22	22
Nº AGUJ.	4	4	4	4	8	8	8	8	8



VERSIONES ESPECIALES

CIERRES MECÁNICOS

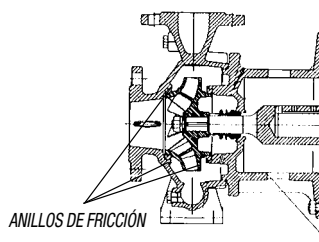
MODELO
KDN32-125.1
KDN32-125
KDN32-160.1
KDN32-160
KDN32-200.1
KDN32-200
KDN40-125
KDN40-160
KDN40-200
KDN40-250
KDN50-125
KDN50-160
KDN50-200
KDN50-250
KDN65-125
KDN65-160
KDN65-200
KDN65-250
KDN65-315
KDN80-160
KDN80-200
KDN80-250
KDN80-315
KDN100-200
KDN100-250
KDN100-315
KDN125-250
KDN150-200

- (1) Ref. Catálogo Técnico
cierre "BQQE versión"
cierre con fuelle de caucho
Carburo silicio / Carburo silicio / EPDM
- (2) Ref. Catálogo Técnico
cierre "BQQV versión"
cierre con fuelle de caucho
Carburo silicio / Carburo silicio / Viton
- (3) Ref. Catálogo Técnico
cierre "BAQV versión"
cierre con fuelle de caucho
Carbón / Carburo silicio / Viton

REVESTIMIENTO EN CATAFORESIS DE LAS PARTES EN CONTACTO CON EL LÍQUIDO
PARA VERSIONES CON TURBINA DE BRONCE

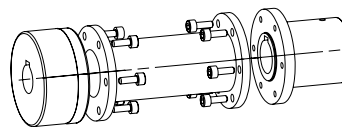
MODELO
KDN32-125.1
KDN32-125
KDN32-160.1
KDN32-160
KDN32-200.1
KDN32-200
KDN40-125
KDN40-160
KDN40-200
KDN40-250
KDN50-125
KDN50-160
KDN50-200
KDN50-250
KDN65-125
KDN65-160
KDN65-200
KDN65-250
KDN65-315
KDN80-160
KDN80-200
KDN80-250
KDN80-315
KDN100-200
KDN100-250
KDN100-315
KDN125-250
KDN150-200

CON ANILLOS DE FRICCIÓN



MODELO
KDN32-125.1
KDN32-125
KDN32-160.1
KDN32-160
KDN32-200.1
KDN32-200
KDN40-125
KDN40-160
KDN40-200
KDN40-250
KDN50-125
KDN50-160
KDN50-200
KDN50-250
KDN65-125
KDN65-160
KDN65-200
KDN65-250
KDN65-315
KDN80-160
KDN80-200
KDN80-250
KDN80-315
KDN100-200
KDN100-250
KDN100-315
KDN125-250
KDN150-200

CON ACOPLAMIENTO ESPACIADOR



MODELO
KDN32-125.1
KDN32-125
KDN32-160.1
KDN32-160
KDN32-200.1
KDN32-200
KDN40-125
KDN40-160
KDN40-200
KDN40-250
KDN50-125
KDN50-160
KDN50-200
KDN50-250
KDN65-125
KDN65-160
KDN65-200
KDN65-250
KDN65-315
KDN80-160
KDN80-200
KDN80-250
KDN80-315
KDN100-200
KDN100-250
KDN100-315
KDN125-250
KDN150-200